

More than 130 years of Bavarian Hospitality

The history of the Seidl family dates back to the 18th century, having its original roots in agricultural farming, when the family lived and worked as peasants in the Bavarian Oberland. Around 1800, young Bartholomäus Seidl, born second to last of seventeen children to the „Obermayr“-Clan at Großhartpenning, a small village close to Holzkirchen, and his wife Walburga, set off and settled east of Munich. There they made their fortune in bricks which in the growing residential city were sold like hot cakes. His son Johann Seidl, however, abandoned the rewarding brick business preferring to meet new challenges.

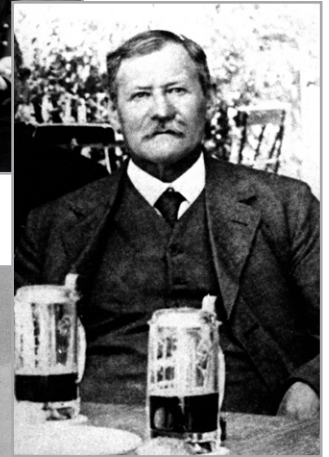
Already his first inn in Dietersheim, directly located on the former important route leading from Munich to Freising, had been a big success. With the sales revenue of the inn Johann Seidl later purchased the baroque castle estate Erching by auction, which once belonged to Freising's prince-bishop and after 16 years sold it off again, with profit, of course.

In 1857 Johann and his family settled in Ismaning, where he purchased the “Muehlhauser Anwesen” (Muehlhauser Estate), a manor with two mills, one of them a sawmill, the other one a grainmill. „Where there is water, things keep turning“ he used to say. Later his son divided the estate in two and gave the sawmill to his firstborn, Johann. Today the former sawmill houses the „Kultur- und Bildungszentrum Seidl-Mühle“ (centre for culture and education). His younger son Anton received the smaller mill, which was located directly in the heart of the village between the church and castle grounds. In 1894 the very same Anton Seidl and his wife Katharina opened an inn next to the grainmill, which originally served guests only at weekends.

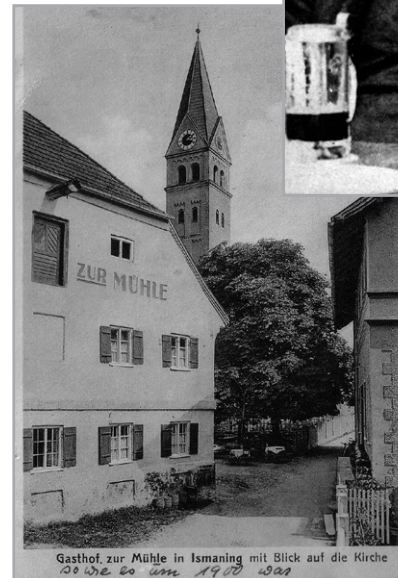
In 1898 the grainmill was hit by lightning, burned down and was replaced by a hydroelectric power station.



Katharina Seidl
(*1877 +1940)



Anton Seidl
(*1866 +1941)



Postal card,
about 1900

Anton Seidl
acting at the
rural folk
theatre, about
1920



Anton Seidl and his friends on tour, about 1935

Anton, his son, took over the inn and the estate in 1940 and after World War II extended the business, building an impressive pub with guest accomodation. The landlord's sociable personality and the cooking abilities of his Swiss wife Alice, became widely known and after the Sunday's services soon more and more people poured into the inn. The gastronomical business of "Gasthof zur Mühle" took its course.



The Inn, about 1940

In 1969 his son Anton got married and took over the business together with his wife Rosa. For quite some years beat and rock resounded in the „Beatshed“, the Mühle's dancing hall. Quite a few couples found one another and still remember that establishment.



Just married
Alice and
Anton Seidl,
June 24th,
1930

The Hotel „Zur Mühle“ was opened in September 1982 and expanded in 1986. At that time also conference rooms and a wellness area had been established.



Beer garden 1930

Since 2002 Anton and Rosa's son Anton has been in charge. He is able to look back at over 130 years of prosperous family tradition in the hospitality business. In cooperation with their team, Anton and Sandra Seidl have made it their point to make their guests feel at home in Ismaning. Be it a private celebration, a vacation or a business trip, the „Hotel-Gasthof zur Mühle“ offers all comforts of a house well managed combined with a warm personal atmosphere.



Toni Seidl with his sister,
Elisabeth, 1944



Rosa and
Anton Seidl
24. June 1969



Family Seidl
Summer 2024